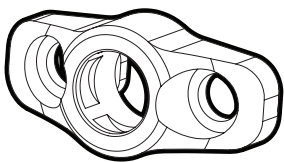




M-LOK™ QD SLING MOUNT

Aluminum QD Sling Mount for M-LOK Compatible Systems

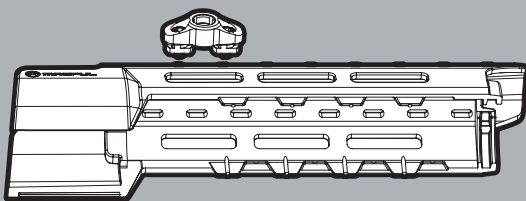


- ⚠ WARNING:** BEFORE STARTING, MAKE SURE THE WEAPON IS UNLOADED, THE CHAMBER IS EMPTY, AND THE SAFETY ENGAGED.
- ⚠ CAUTION:** PLEASE READ ALL INSTRUCTIONS BEFORE PROCEEDING. COMPONENTS UNDER SPRING PRESSURE MAY EJECT FORCEFULLY AND COULD CAUSE INJURY.
- ⚠ WARNING:** OBSERVE SAFE FIREARM HANDLING PRACTICES AT ALL TIMES. FAILURE TO DO SO MAY RESULT IN SERIOUS BODILY INJURY OR DEATH. MAGPUL INDUSTRIES SHALL NOT BE RESPONSIBLE FOR INJURY, DEATH OR PROPERTY DAMAGE RESULTING FROM FAULTY INSTALLATION, MISUSE, ILLEGAL USE, OR MODIFICATION OF THIS PRODUCT.

INSTALLATION INSTRUCTIONS

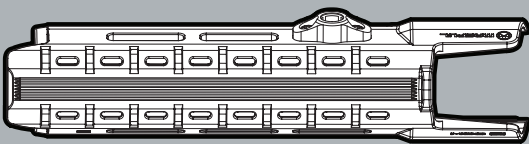
STEP 1: Install Mount onto M-LOK Surface

Utilizing the *M-LOK Mounting System*, align the *QD Sling Mount* to the desired position and insert it flush with the mounting surface. Secure *M-LOK Screws* using a *5/32" hex wrench*. See enclosed *M-LOK accessory sheet* for detailed *M-LOK instructions*. (072-0087)



- ⚠ WARNING:** DO NOT OVER-TIGHTEN. Over-tightening may result in damage to the accessory or surface.

STEP 2: Verify Installation



Perform final inspection including function check per **US Army TM 9-1005-23&P Unit and Direct Support Maintenance Manual (3-97)** to verify proper weapon function.

Always test fire your weapon before using it in an operational environment.